



**CODESYS**

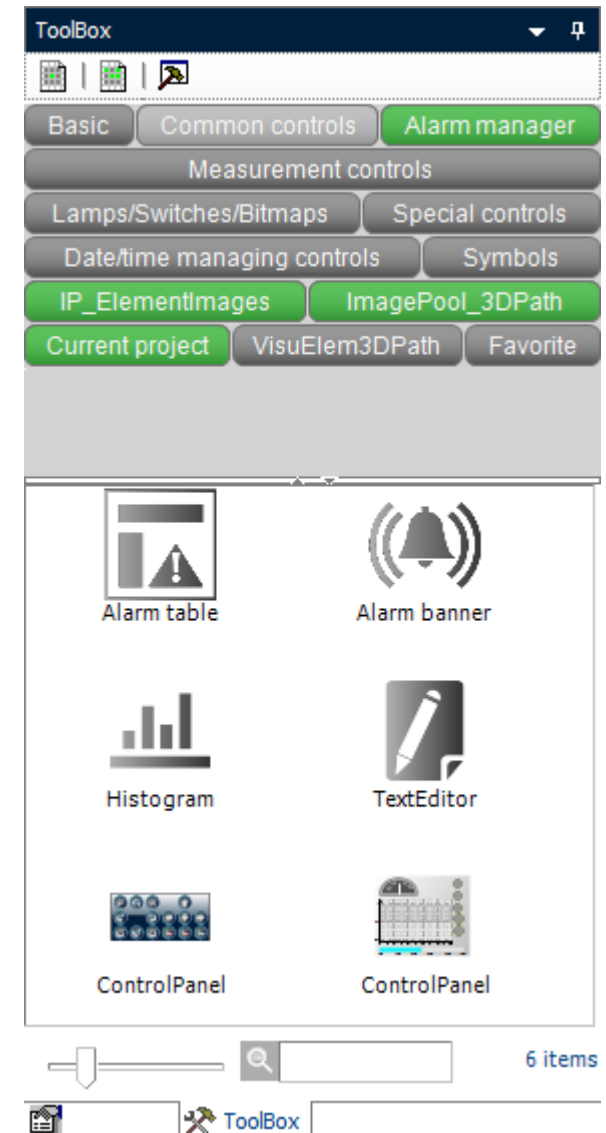
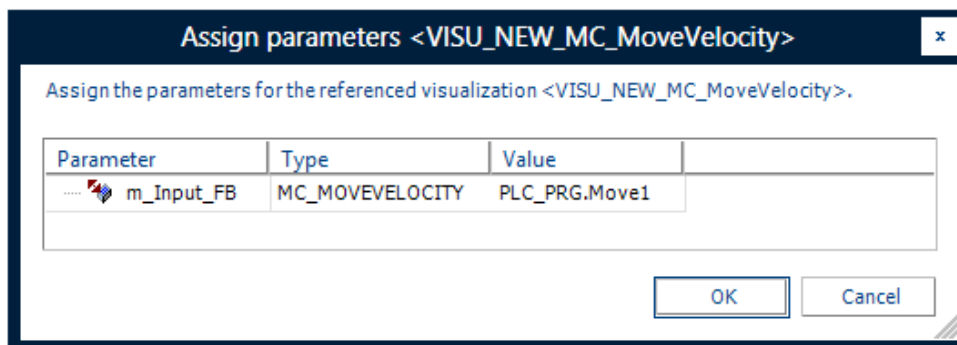


# **CODESYS V3.5 Service Pack 7**

**Preliminary Information on Visible and Structural Changes**

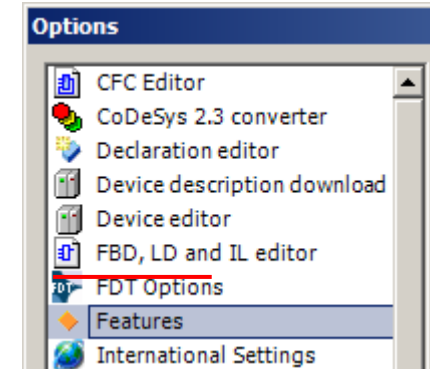
## New Toolbox

- Preview of available visualization elements, images, and project visualizations
- Full-text search in image pools, libraries, and visualization objects of the project
- Multiple selection of categories / tags (also customizable)
- New dialog for easier connection of defined frames to according FB instances



## General

- Feature sets removed  
(no dialogue after start up / options category removed)
- Improved Cross Reference List with
  - Option to display structured view in cross reference
  - Much more detailed search results



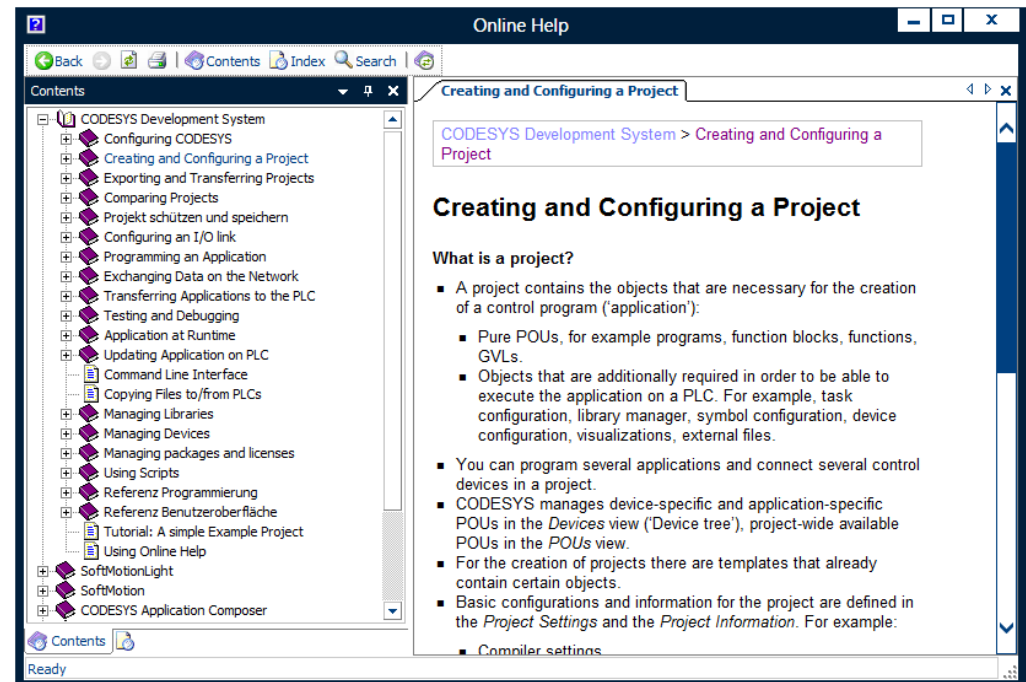
**Cross Reference List**

Name:  ➔ 🔍 📄 ⏪ ⏩ 🖨️

Symbol	POU	Variable	Access	Type	Address	Location	Object	Comment
[-] iCounter	PLC_PRG	iCounter	Declaration	INT		Line 3 (Decl)	PLC_PRG [Device: PLC Logic: Application]	
iCounter	PLC_PRG	iCounter	Write	INT		Line 1, Column 1 (Impl)	PLC_PRG [Device: PLC Logic: Application]	
iCounter	PLC_PRG	iCounter	Read	INT		Line 1, Column 13 (Impl)	PLC_PRG [Device: PLC Logic: Application]	

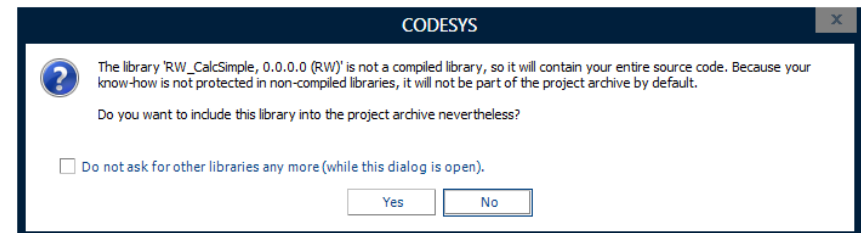
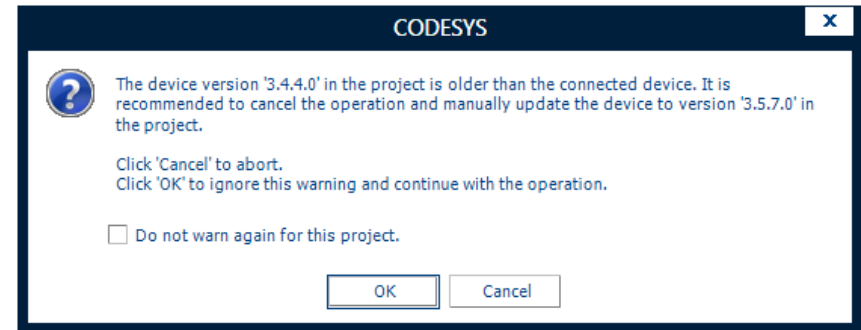
## Online Help

- New content structure
  - Online help for typical use cases of the CODESYS Development System
  - Reference part still available (for example, context sensitive help), but restructured



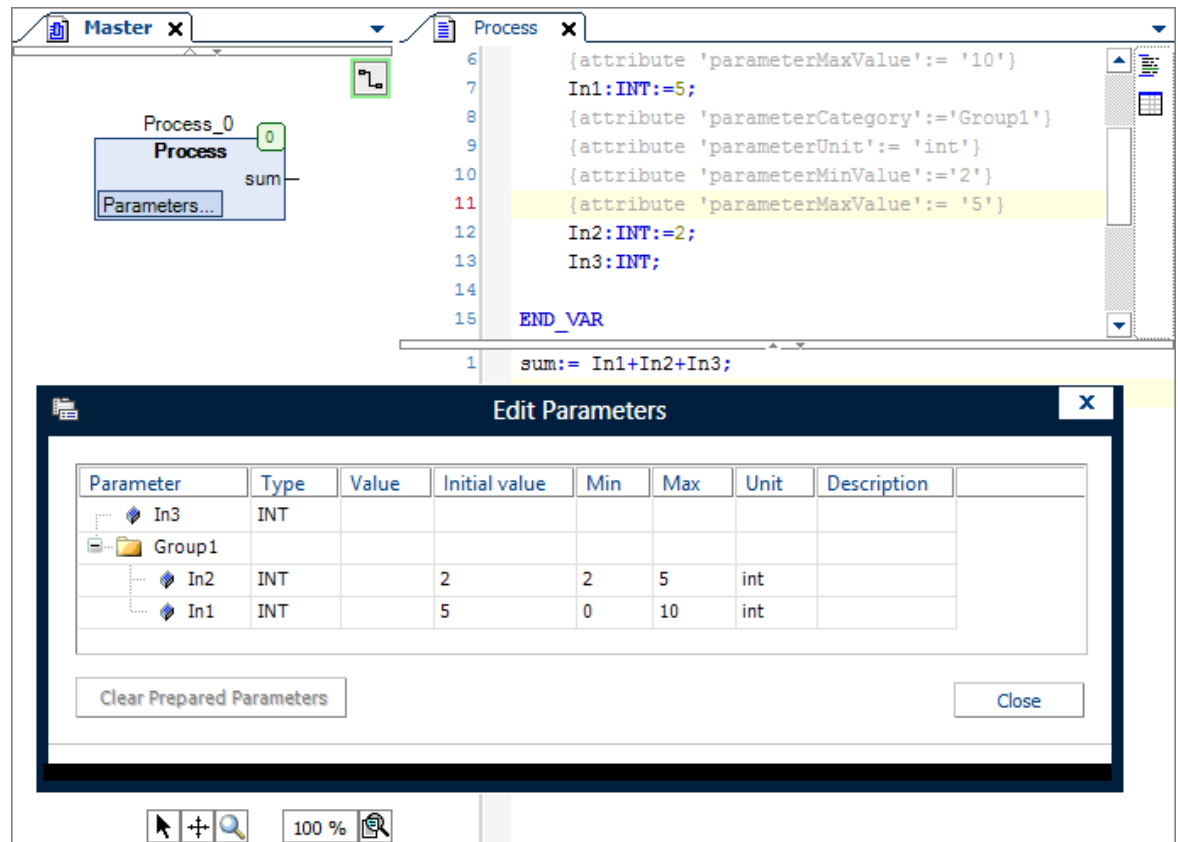
## New Warnings

- Online Manager: Warning if user tries to login with an old device description to a newer PLC version
- Project Archive: Warning if the created archive contains non-compiled libraries



## CFC

### Improved handling of parameter inputs for process industry



The screenshot displays the CODESYS CFC editor interface. On the left, a 'Process\_0' block is shown with a 'Parameters...' button. The main editor area shows the ladder logic for the 'Process' block, including variable declarations and a calculation:

```

6 {attribute 'parameterMaxValue':='10'}
7 In1:INT:=5;
8 {attribute 'parameterCategory':='Group1'}
9 {attribute 'parameterUnit':='int'}
10 {attribute 'parameterMinValue':='2'}
11 {attribute 'parameterMaxValue':='5'}
12 In2:INT:=2;
13 In3:INT;
14
15 END_VAR

1 sum:= In1+In2+In3;
  
```

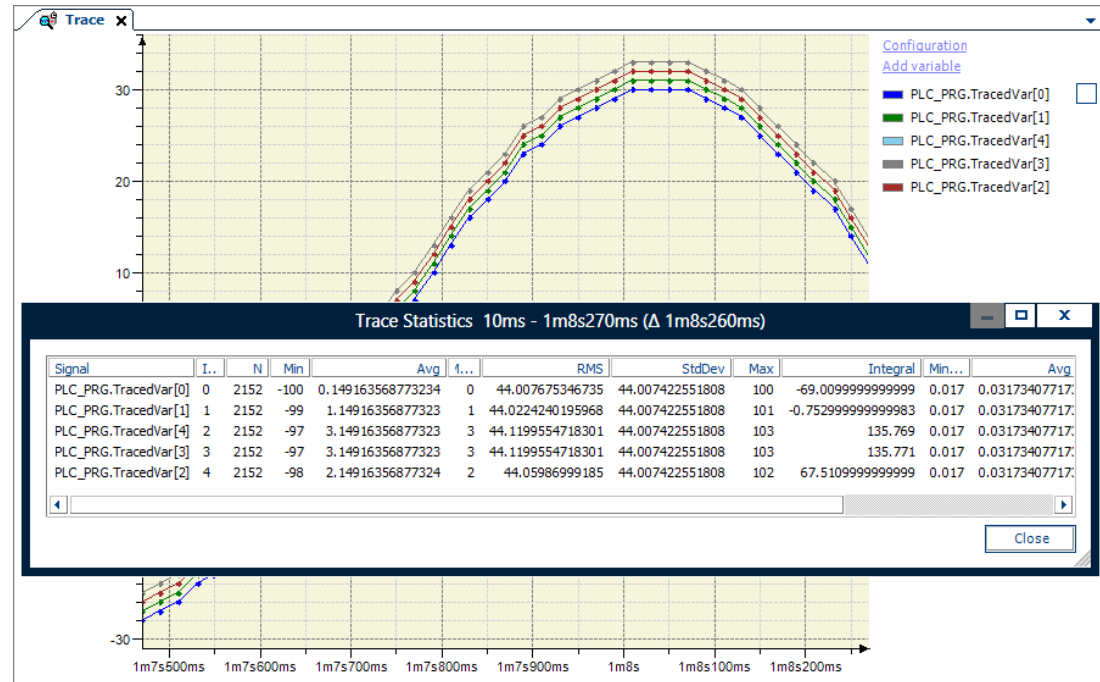
An 'Edit Parameters' dialog box is open in the foreground, showing a table of parameters:

Parameter	Type	Value	Initial value	Min	Max	Unit	Description
In3	INT						
Group1							
In2	INT	2	2	2	5	int	
In1	INT	5	5	0	10	int	

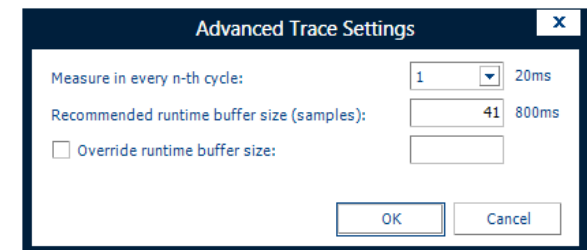
Buttons for 'Clear Prepared Parameters' and 'Close' are visible at the bottom of the dialog.

## Trace

### Trace Statistics: Analyze function



### Simplified use of Advanced Trace Settings



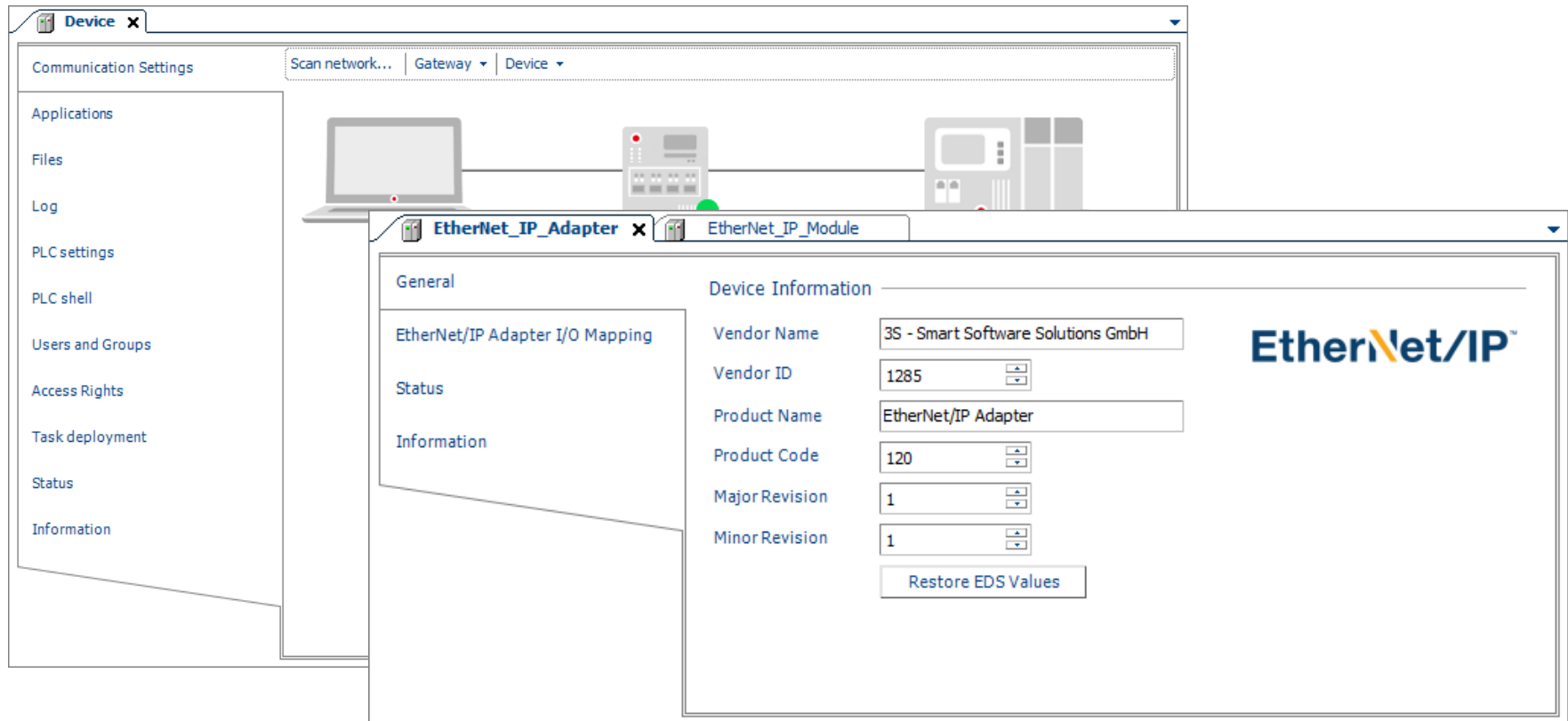
The 'Advanced Trace Settings' dialog box contains the following configuration options:

- Measure in every n-th cycle: 1 (dropdown), 20ms
- Recommended runtime buffer size (samples): 41 (input field), 800ms
- Override runtime buffer size: (empty input field)

Buttons: OK, Cancel

## Device and Fieldbus Editors

- Now all with horizontal tabs
- 1<sup>st</sup> tab is usually titled “General” (except for the device editor)

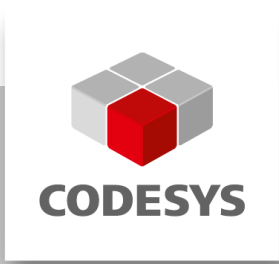






## Device and Fieldbus Editors

Expert settings hidden, in case device does not support them



Inspiring Automation Solutions

Thank you for your attention.